



Matrix

(212) 787-7279

P.O. Box 1410
NY, NY 10023

matrixbymail@gmail.com



1) Rare 34" Closed Mouth Steiner Size '20' - Blue PWs, shaded eyelids, hip length Fr. Wig, prof. restoration, 18" head! \$7500 just \$1795.

2) 23" Closed Mouth Steiner Bebe - blue PWs, hip length Fr. Wig, perfect condition, \$3250. (See #14)

3) Orig. Milliners Models - both well preserved, 12" in blue layers \$425; 11" in gown \$275.

4) UFDC 8-10" Artist Doll - Orig Signed & Mint. \$75 each

5) 15" Pre-1900 Trousseau Doll in Pretty Trunk - All Orig., mint 'BP' w. elegant Wardrobe etc. \$1495

6) Early K*R 192 Lad - Mint 13" Stiff Wrist Cabinet Squire All Orig in elegant Factory Clothes/Shoes \$695

7) 34" Life Like 1899 'Tete Jumeau' - 18" head, bl. sl. eyes w. lashes, chunky body, period clothes in layers, tiny flaw, all for only \$950



8) 9" Fully Jtd. Kestner - mint layers of charm, orig. Pate/Wig. \$450; 11" Factory Orig. Halbig Boy - fully jtd., w. Cap. as seen in Coleman's Volume 2. \$495

9) 23" Dulcet S.H. '739' - total beauty! Bl. PWs, OM, gorgeous bisque, mohair wig, early Stiff Wrist Body, all mint! \$2250

10) Mint & Exquisite 18" Hertal Schwab '141' - Ivory pure bisque, jewel bl. eyes, the Rare Open Mouth, total luxury. \$2900

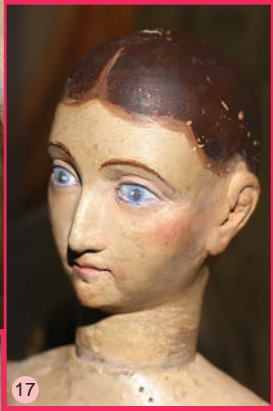


11) Edwardian Doll House Doll - Mint 7" Man, unusual Brown Mustache & Orig. Suit \$275; 6" rare Brunette Wife, unusual face, A/O, as-found included free!

12) 25" Long Face Jumeau - artist sgnd., blue PWs, all antique from her Wig to Leather Shoes! \$450

13) Heirloom 30" Schmidt & Co. Sophisticate - peachy bisque, round eyes, hip length wig & lush Silk on Silk Vintage Clothes! \$550

14) Bebe Steiner- please see #2



15) 26" Magnificent 1790's Gesso Over Wood Neapolitan - great pathos, Gl Eyes, early OM w. Carved Teeth, perf. fingers & toes. \$1800

16) 26" Ethereal Wooden Santos - chiseled features, waist length Orig. Wig, long neck, perf fingers, haunting beauty. \$2500

17) Large 24" Fully Jtd. Wooden Mannequin ca:1800 - lady w/ Socket Head, Ball Jointed Waist & ankles too etc, long fingers, \$3500

18) Very Rare Lenci '2000 E' - 12" All Orig, w Label, Shelf dust no moth/stain for only \$450

Early Steiff 'Bully' - mint w. Collar & Tag 4" long. \$175

19) Rare Mint Character - see #10

20) Kestner 143 Heirloom Twins - 13" pre-1900 Trousseau Dolls, complete matching antique ensembles w. Trunk etc. (see #37 & #39) \$1595

21) Steiff 9" 'Cozy Schnauz' - Collar, Button & Tag, play pup. \$110; Steiff 2" Schnaus & Collar \$95

22) 14" FnB Suzanne MIB - Factory Clothes, bracelet, label, tissue, promos, no craze & Magnet Hands! \$450

Matrix
 (212) 787-7279
 P.O. Box 1410 NY, NY 10023
 matrixbymail@gmail.com

Quality Antique Dolls by Mail
 Return Privilege • Layaways
 Member UFDC & NADDA

MasterCard VISA PayPal

23) 12" MA 'Sleeping Face' Infant - rare mld. hair compo, All Orig! \$175; 22" Happy Face Horsman Baby - in Factory Clothes, tin eyes. \$110

24) 25" Swift Advertising Doll - All Orig. w. Promo Printed Dress & Hat, red hair, sl. eyes, clean & rare! \$295

25) 18" Molded Clothes Compo - w. movable head, ever so pretty. \$110; 12" Unusual Little Annie Rooney - Orig Dress & Hang Tag, Cameo for King Features. \$495

26) Sizzy & Puzzy - 15" Factory Pair of comic characters, excel. & half price at \$395 pair.

27) Sleep Eyed Patsy's - 14" A/O Patricia w. coat/mittens; 19" Ann in Factory Snowsuit; 22" Lou is A/O plus Leopard Coat! \$250 each

28) Unusual Belgium Victory Doll - mint 13" character in Orig. Clothes \$195; 10" Snookums - mint Comic Character, fully jtd. body & fully sgnd! \$450

29) Unlisted 16" AM '266' - Gl. Sl, Eyes, pretty Factory Dress, excel. \$395; Steiff Kitten w. Label/Bell...call



30) 14" Mint 'Lucia' Lenci Russian - unplayed with gorgeous bright color, Braids & Headwear \$695



31) 35" Life Size 'Bebe Jumeau' - ca:1899. Lovely bisque w. sheen, bl. PW. Sl. Eye, long Fr. Wig, chunky Size 15, large & luscious in vintage Silk Couture! \$1895



33) 20" Mein Liebling '117' - sultry K'R, sleep eyes/lashes, om, oily sheen, quality Mohair Tresses & lovely clothes. \$895

32) 12" Lenci '111' - All Orig. w. curls & Flower Bonnet. \$350; 13" Unusual Australian Felt-Lenci type w. Factory 'Husby' Hang Tag & oodles of curls! \$385



34) Factory Original 19" Kestner Lady - mld. bust, slender waist/limbs, Factory Up-comb Wig/Pate & Orig. Maid Uniform. w. heeled shoes, \$1200

35) German Silver Service for Six - in Original 5" by 4" Leather Case w. ties & drop front. Choice! \$375

36) 14" Cabinet Handwerck '79' - flawless bisque/body, Fr.brows, adorable vintage ensemble & red ringlets! \$375

37) see #20; 38) see #16; 39) see #20

40) BSW Flirty Child - 21" Coquette w. lively bl. flirty eyes & sweet vintage clothes, tiny hidden hairline. Just \$325



41) 25" All Original D&A - unusual fully jtd. mystery maker, big shoe button eyes, Factory Wig, & sweet old clothes. \$425

42) 14" Unusual Rempel & Breitung Mariner-dazzling blue eyes, Orig. Wig & Shoes! \$35

43) All Original 25" JDK '214' Character - creamy bisque, shiny round eyes, hip length wig/pate, mint body too! So tender \$575



Matrix
 (212) 787-7279
 P.O. Box 1410
 NY, NY 10023
 matrixbymail@gmail.com

